

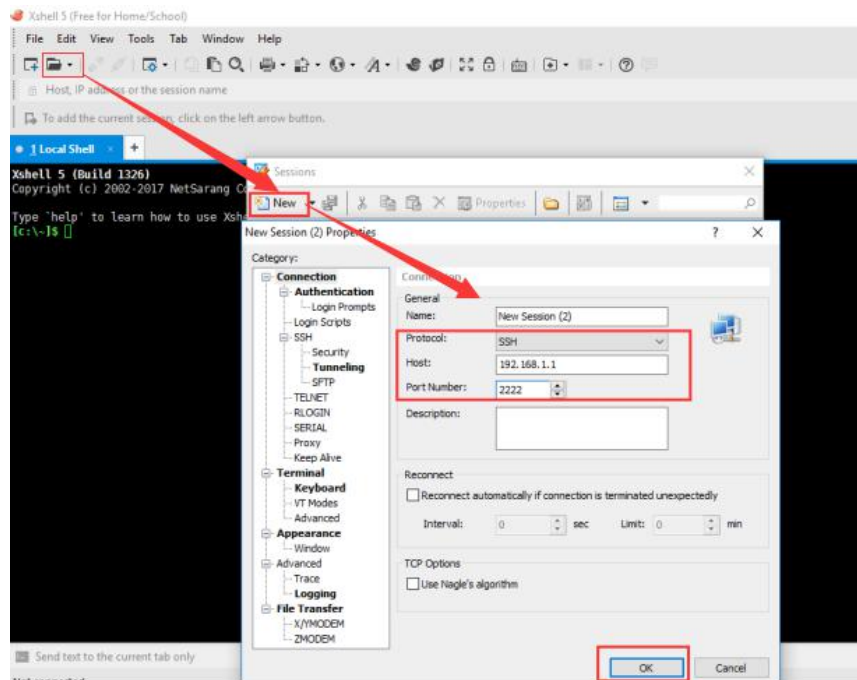
G806-A RF Test

Step 1: Hardware connection: Connect G806-A LAN interface to PC Ethernet interface and configure PC to DHCP.

Step 2: Software: Use Xshell software to do the whole test.

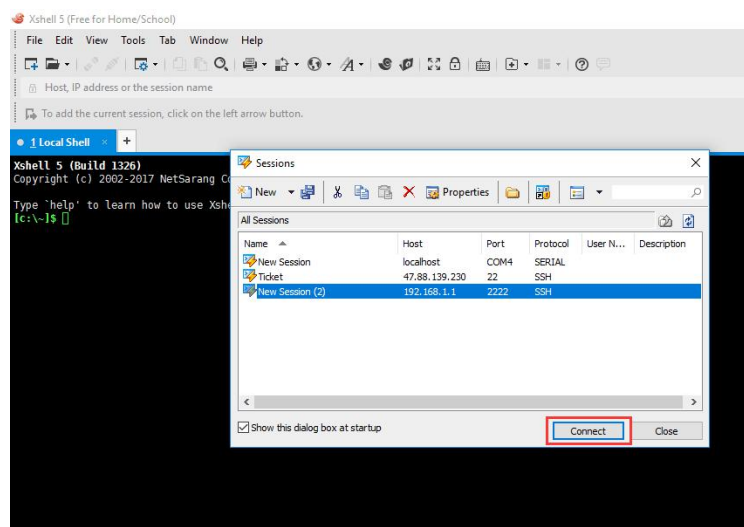
Step 3: Run Xshell software and connect to G806-A by SSH as follows:

Firstly, establish a new session:

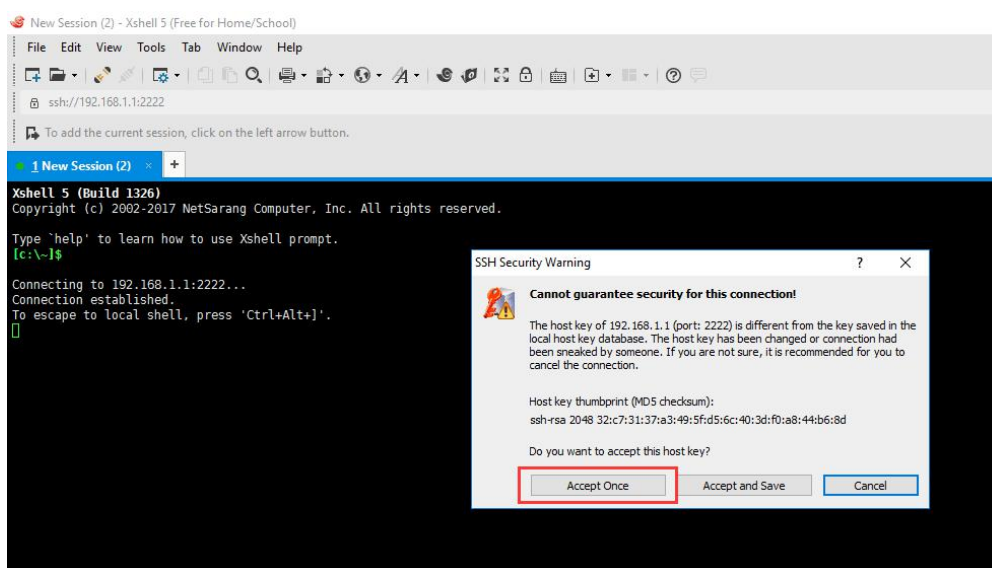


- Protocol: Choose SSH.
- Host: G806-A IP address(192.168.1.1 is default IP address of G806-A).
- Port Number: 2222.

After configuring new session parameters, click 'OK' to save and establish. Then click 'Connect' to set up connection.

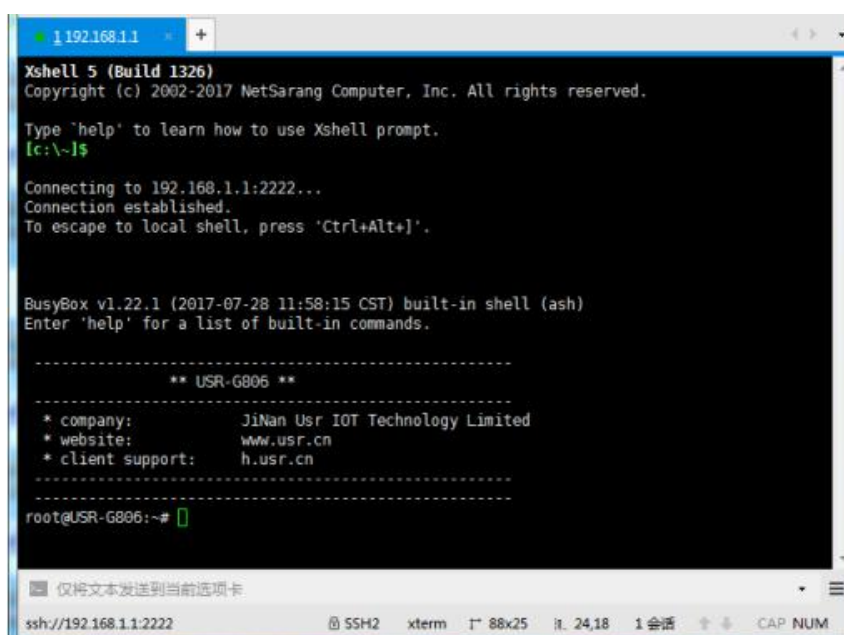


In following dialog box after clicking 'Connect' on above figure, click 'Accept Once'.



Then log in with username "usr" and password "www.usr.cn".

Step 4: After logging in with correct username and password, Xshell will enter the following interface:



In above interface, write "killall usr_lte" and press 'Enter' on keyboard. Then write "minicom -s" and press 'Enter' on keyboard to enter [configuration] interface.

In the [configuration] interface, press 'Down' on keyboard to choose 'Serial port setup' and press 'Enter' on keyboard. It will enter 'Serial port setup' configuration interface.

In the 'Serial port setup' configuration interface, press 'A' on keyboard to configure 'Serial Device': Change "ttyS1" to "ttyUSB2", then press 'Enter' on keyboard.

```
A - Serial Device      : /dev/ttyUSB2
B - Lockfile Location  : /var/lock
C - Callin Program    :
D - Callout Program   :
E - Bps/Par/Bits      : 115200 8N1
F - Hardware Flow Control : Yes
G - Software Flow Control : No

Change which setting?

Screen and keyboard
Save setup as dfl
Save setup as..
Exit
Exit from Minicom
```

Then press 'F' on keyboard to change status of Hardware Flow Control to "No" and press 'Enter' on keyboard to back to [configuration] interface. After backing to [configuration] interface, press 'Down' on keyboard to choose 'Save setup as dfl' and press 'Enter' on keyboard to save configuration.

```
[configuration]
Filenames and paths
File transfer protocols
Serial port setup
Modem and dialing
Screen and keyboard
Save setup as dfl
Save setup as..
Exit
Exit from Minicom

Configuration saved
```

After saving configuration, press 'Down' on keyboard to choose 'Exit' and press 'Enter' on keyboard to enter followings interface:

```
Welcome to minicom 2.7

OPTIONS:
Compiled on Jul 17 2017, 10:57:58.
Port /dev/ttyUSB2, 11:32:40

Press CTRL-A Z for help on special keys
```

At last, write "ATE1" and press 'Enter' on keyboard to enable the echo function.

After donging all above steps, user can follow <<9X07 Configuration>> to write AT commands.